

McCULLOCH®

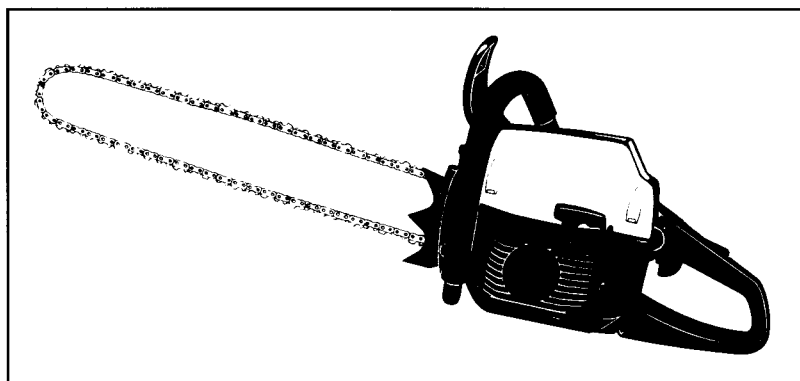
PARTNER

ILLUSTRATED PARTS LIST

PROMAC 54
PROMAC 61
PARTNER P610
PARTNER P541

SERIAL NUMBER PREFIX 01

CE



March 2000

C	1	240861	McCulloch	1	C	83	● 241473	1
C	2	241929	Partner	1	C	84	241357	1
B	2	● 240485		1	85	235642		1
B	3	● 240484		1	86	227259		1
4	● 227470			1	87	241147	M5x16	1
C	5	● 227468		1	88	236936		1
A	6	● 227471		1	89	236933	M6x18	1
C	7	● 227300		1	90	240845	M5x16	1
8	● 227467			1	91	241474		1
9	● 240884			1	92	227259		1
10	235530	M5x35		2	93	241308		1
11	235803	M5x25		2	B	94	● 227406	1
12	227626			4	A	95	● 227407	1
13	227762			1	96	● 227408		1
14	241312			1	97	● 227409		1
B	15	227508		1	C	98	● 227411	1
C	16	● 227420		1	99	● 227676		1
B	17	227507		1	100	● 227626		4
C	18	● 227459		1	101	● 235642		2
19	235806	M5x20		7	102	● 235530	M5x35	2
20	227626			7	C	103	● 241468	1
21	241352			2	C	104	● 241467	1
22	235806	M5x20		2	105	● 241469		1
23	227629			2	106	● 240863		1
24	235642			2	107	241572		1
25	227629			2	108	227626		2
26	227563	M5x16		1	109	235802	M5x14	2
27	235248			1	110	240863		1
28	229524			1	C	111	241464	1
29	241356			1	C	112	241465	1
30	227563	M5x16		1	113	241466		1
31	227259			1	114	241479		1
32	247202	yellow/gal or orange/gal		1	115	235642		1
	241926	gold/oro or gold		1	116	227626		1
33	● 227458	M5x21		3	C	117	240036	1
C	34	241501		1	118	235803	M5x25	1
35	● 241470			1	119	241487		1
36	235806	M5x20		2	120	241505		2
37	227626			2	121	241484		1
C	38	FIGURE 2			122	241485		1
A	39	240010		1	123	229510		3
40	227565	M5x25		4	C	124	241319	1
C	41	227483		1	125	240314	M6x16	1
C	42	240654		1	126	227504		1
43	227491			1	127	235225		1
44	227567	M5x70		2	C	128	241350	1
45	236381	M5x10		1	129	229514		1
46	227626			1	A	130	227762	2
47	227566	M5x65		2	131	241317		1
48	227629			2	132	248166		1
49	227316			1	133	● 229450		2
50	235802	M5x14		2	134	● 227497		1
51	227458	M5x21		2	135	● 236728		1
B	52	227561		1	C	136	● 227499	1
C	53	FIGURE 3			137	248167		1
54	227424			1	138	● 229450		1
A	55	227417		1	C	139	● 241307	1
56	227629			2	C	140	● 227370	2
57	235803	M5x25		2	141	241339		1
C	58	240114		1	C	142	241344	1
C	59	227395		1	143	241345		1
C	60	227371		1	144	241346		1
61	227616	M5x16		2	C	145	241347	1
62	235642			2	146	● 227359		3
63	227626			2	B	147	● 227360	3
C	64	227368		1	148	● 241348		1
C	65	227369		1	C	149	227546	1
C	66	227391		1	C	150	227329	1
C	67	227631		1	B	151	227547	1
68	241300			1	152	229519		1
C	69	227335		1	153	241349		1
A	70	227516		1	154	241343		1
B	71	227366		1	155	228908	M4x14	2
B	72	227365		1	C	156	241320	1
C	73	241354		1	C	157	● 241332	1
74	● 227443			1	C	158	227383	1
75	● 227445			1	C	159	241342	1
76	● 227801	M4x75		1	160	228908	M4x14	3
77	● 227904			1	C	161	241340	1
78	● 240683			1	C	162	227464	1
79	● 229524			1	C	163	● 227527	1
80	● 240119			1	C	164	241341	1
81	● 240862			3	165	240309		1
82	● 241471			1	166	240363		1
					167	227943		1

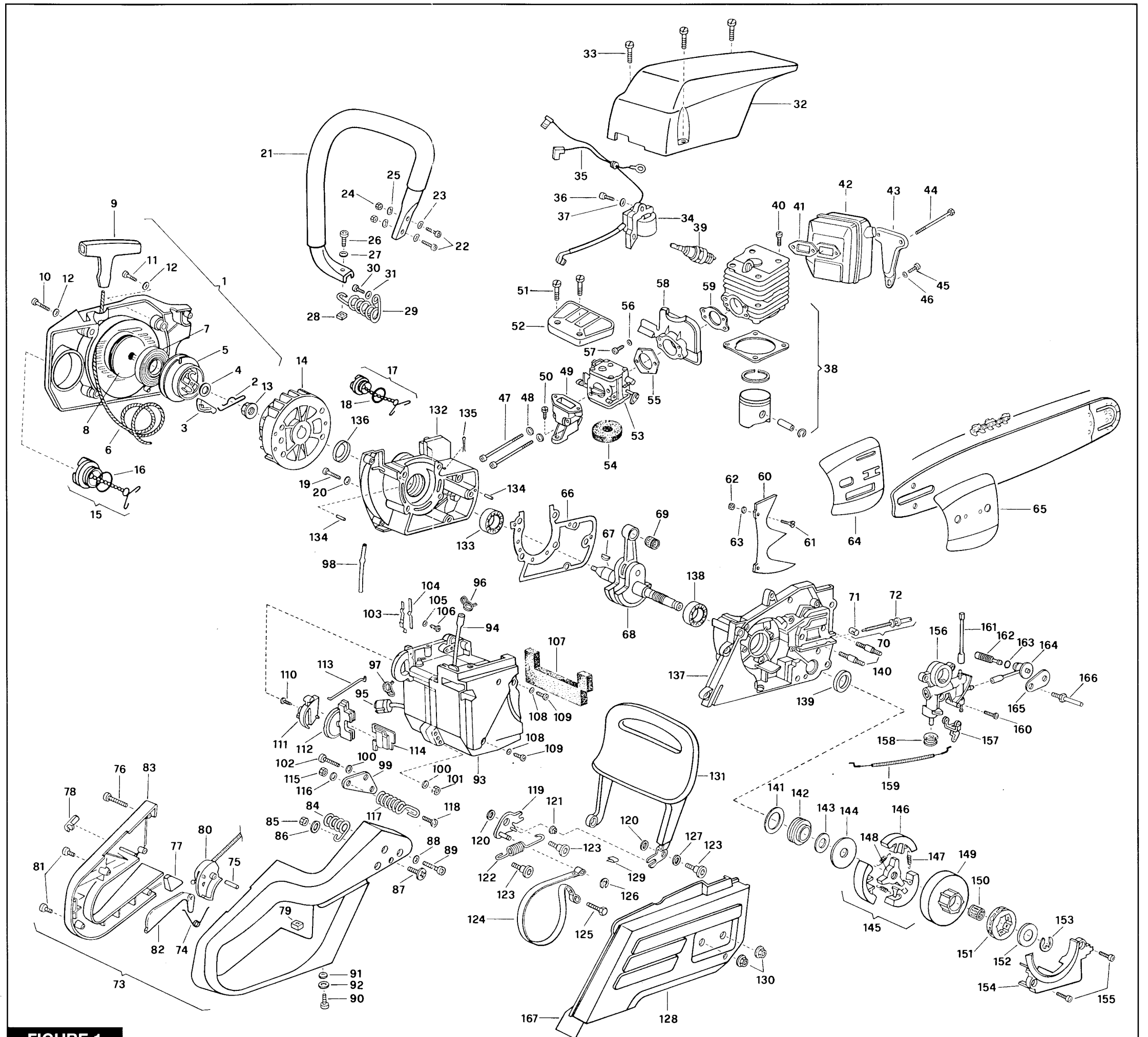


FIGURE 1

A = high moving - alta rotazione - haute demande - große Nachfrage
 B = medium moving - media rotazione - moyenne demande - mittelmäßige Nachfrage
 C = slow moving - bassa rotazione - basse demande - wenige Nachfrage

	54 cc	<table border="0"> <tr><td>C 1</td><td>227514</td><td>1</td></tr> <tr><td>B 2</td><td>● 227393</td><td>1</td></tr> <tr><td>C 3</td><td>● 227510</td><td>1</td></tr> <tr><td>4</td><td>●● 229544</td><td>2</td></tr> <tr><td>B 5</td><td>●● 227543</td><td>1</td></tr> <tr><td>6</td><td>●● 227344</td><td>1</td></tr> </table>	C 1	227514	1	B 2	● 227393	1	C 3	● 227510	1	4	●● 229544	2	B 5	●● 227543	1	6	●● 227344	1
	C 1	227514	1																	
B 2	● 227393	1																		
C 3	● 227510	1																		
4	●● 229544	2																		
B 5	●● 227543	1																		
6	●● 227344	1																		
59 cc	<table border="0"> <tr><td>C 1</td><td>227515</td><td>1</td></tr> <tr><td>B 2</td><td>● 227393</td><td>1</td></tr> <tr><td>C 3</td><td>● 227511</td><td>1</td></tr> <tr><td>4</td><td>●● 229544</td><td>2</td></tr> <tr><td>B 5</td><td>●● 227544</td><td>1</td></tr> <tr><td>6</td><td>●● 227344</td><td>1</td></tr> </table>	C 1	227515	1	B 2	● 227393	1	C 3	● 227511	1	4	●● 229544	2	B 5	●● 227544	1	6	●● 227344	1	
C 1	227515	1																		
B 2	● 227393	1																		
C 3	● 227511	1																		
4	●● 229544	2																		
B 5	●● 227544	1																		
6	●● 227344	1																		

FIGURE 2

VALBRO WJ 82		
C -	241311	carbur.
B 1	● 229925	1
A 2	●● 237211	1
3	● 229927	2
5	● 237202 L	1
6	● 229930 H	1
C 7	● 237203	1
9	● 240219	1
10	● 240218	1

FIGURE 3

A = high moving - alta rotazione - haute demande - große Nachfrage
 B = medium moving - media rotazione - moyenne demande - mittelmäßige Nachfrage
 C = slow moving - bassa rotazione - basse demande - wenige Nachfrage